

PBS Software Vendor Webinar

Introduction to PBS Data API

Thank you for joining, this webinar will begin at:
3.00pm, 6 November 2023



Acknowledgement of Country

We acknowledge the Traditional Custodians of country throughout Australia and their connections to land, sea and community.

We pay our respect to their Elders past and present and extend that respect to all Aboriginal and Torres Strait Islander people on this webinar today.



Australian Government

Department of Health and Aged Care

Before we begin...



Please turn off your webcam



Please mute your microphone unless speaking



Any questions? Email HPP.Support@health.gov.au



Agenda

- PBS Data Distribution Project background and timeline
- Introduction to the PBS data API
 - API Features and components
 - Requesting access to the API
 - User journeys to access the API
 - Further training and resources



PBS Data Distribution Project

Background

The Department of Health is modernising the consumption and data distribution model for the monthly PBS Schedule data, in order to:

- Improve accessibility to PBS Schedule data;
- Make the data easier to understand and use in software; and
- Improve data latency and data provision through best practice architecture.

Timing

- The project started in 2019, and conducted a series of working group meetings in 2020-21
- A Private Beta with a small group of vendors was held in late 2022
- A Public Beta was held between June and October 2023



PBS Data Distribution Project

The Department is working to the following timeline

- From **November 2023**, the API is a production system. Vendors are encouraged to commence their transition.
- **February 2024** will be the last PBS schedule for which data in existing formats will be released under embargo.
- From the **March 2024** PBS schedule onwards, data released under embargo will be made available only via the API.

A version of the API for use by the general public is also in development. This API will be made available in early 2024.

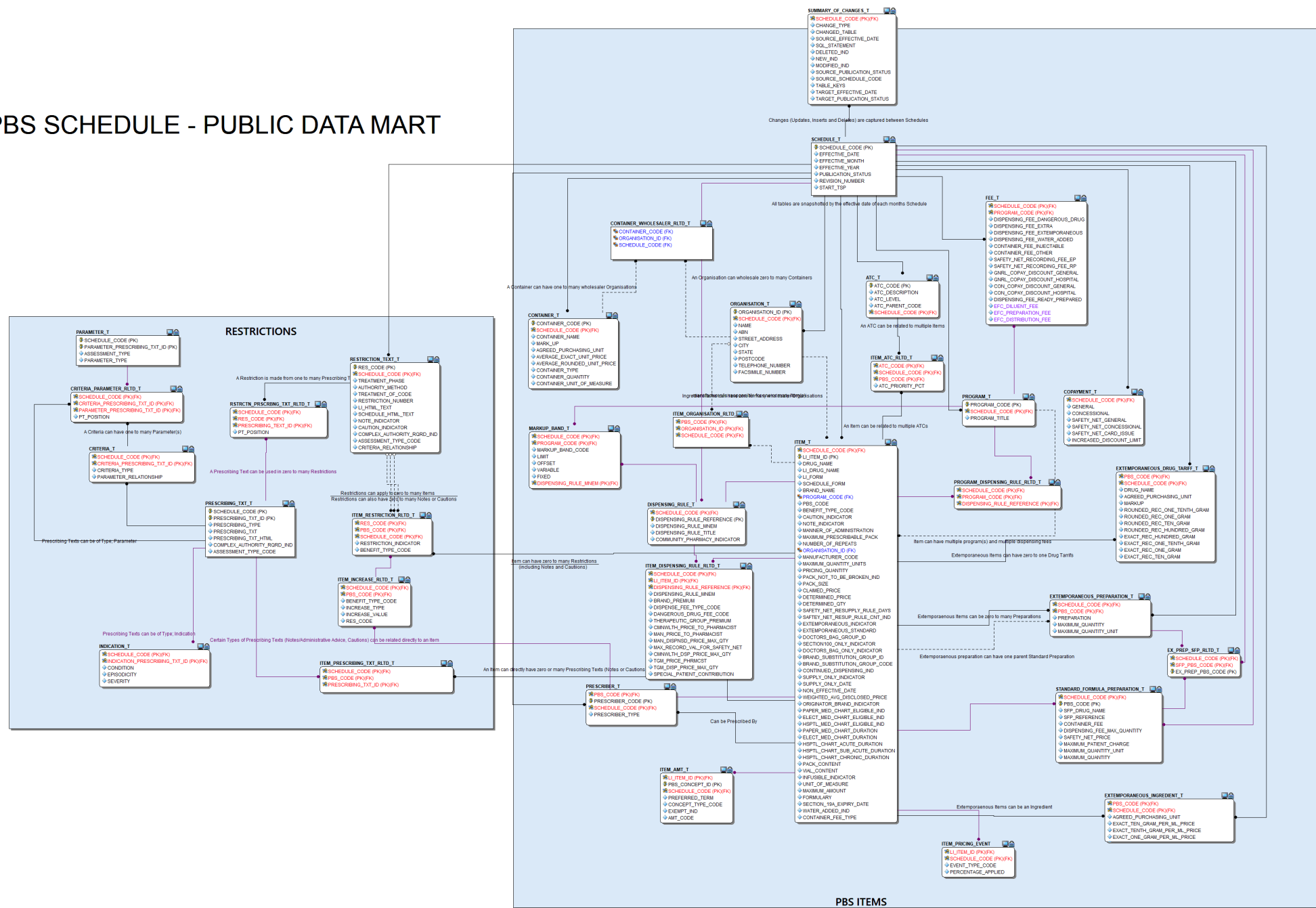
PBS Data Distribution Project

Features of the API

- The PBS schedule data has been loaded into a relational database
- There is one API endpoint for each table in the database
- There is one logical set of data in the API for each combination of PBS item code and Trade Product Pack
- Every effective PBS schedule for the most recent 12 months is in the API
- Data can be downloaded in JSON and CSV formats
- Each month is distinguished in the API by a 'schedule code'
 - The 'schedules' endpoint in the API has metadata about each schedule code
 - Each API request can be filtered by schedule code, PBS program and PBS item code
- The API is rate-limited to one request per second



PBS SCHEDULE - PUBLIC DATA MART



PBS Data Distribution Project

Components of the solution

Health Products Portal

For initial access and annual renewal of credentials

- **Login with myGovID and RAM**
- Register your organisation
- Request access
- (Departmental approval)
- Receive API credentials

Developer Portal

For development of your solution

- **Login with myGovID and RAM**
- Access your subscription key
- Browse API documentation
- Test endpoints
- Sample API queries

API

For regular downloads of PBS schedule data

- **Authenticate with API credentials and subscription key**
- Download schedule data from API endpoints

PBS Data Distribution Project

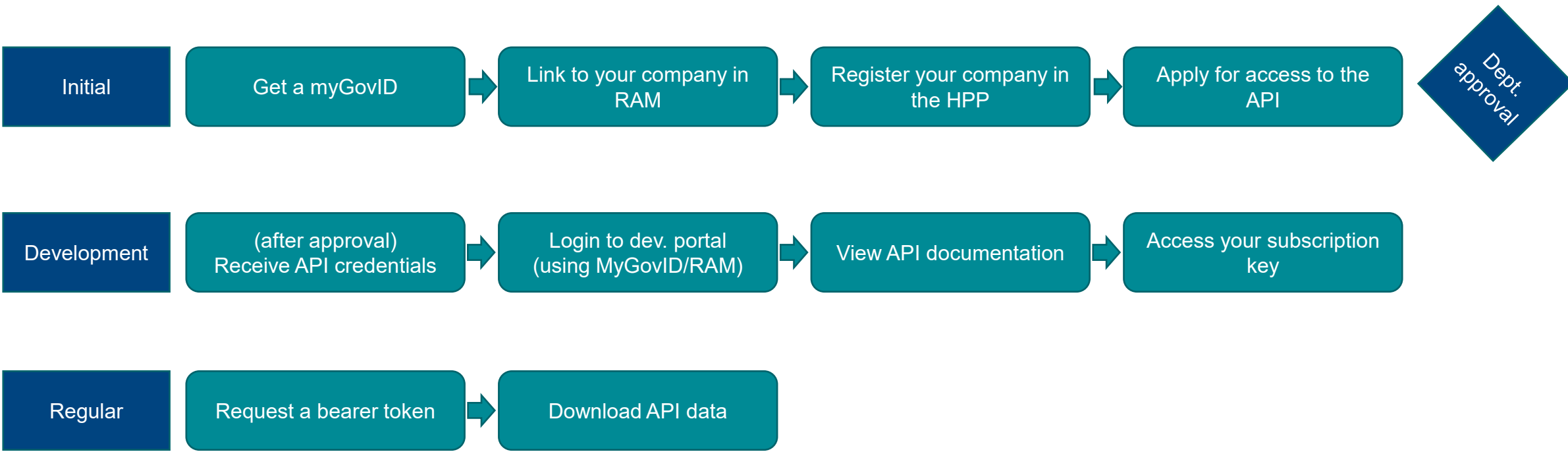
Accessing the PBS data API

- Each Software Vendor is provided unique credentials to access the API
- Applications to access the API are made through the Health Products Portal <https://hpp.health.gov.au/>
- As the API contains data under embargo, only software vendors or developers with a need to access the embargo data will be given access.
- A version of the API (that will contain only public domain data) for use by the general public is being developed. This API will not require authentication.



PBS Data Distribution Project

User Journeys



Further HPP training coming soon on:

- Using the HPP to register your company and apply for access to the API
- Accessing the developer portal and connect to the API
- Understanding the PBS data API

<https://data.pbs.gov.au/discussions/86911.html>



Resources

- Project page: [Data Distribution Project | PBS Data](#)
- User guide for accessing the API (including gaining access, FAQ's, text file mapping, restriction explainer, data dictionary and database diagram):

[HPP Article Details · Health Products Portal](#)



Questions?

- We expect that each organisation's transition to the API will be different
- Organisations are encouraged to contact the Department directly, with your specific concerns
- We look forward to supporting everyone through this transition period