

# PBS Software Vendor Webinar

## Introduction to PBS Data API Public Beta

Thank you for joining, this webinar will begin at 2.00pm,  
3 July 2023



# Acknowledgement of Country

We acknowledge the Traditional Custodians of country throughout Australia and their connections to land, sea and community.

We pay our respect to their Elders past and present and extend that respect to all Aboriginal and Torres Strait Islander people on this webinar today.



Australian Government

Department of Health and Aged Care

# Before we begin...



Please turn off your webcam



Please mute your microphone unless speaking



Any questions? Email [HPP.Support@health.gov.au](mailto:HPP.Support@health.gov.au)



# Agenda

- PBS Data Distribution Project background and timeline
- Introduction to the Public Beta API
  - Accessing the API
  - API Features
  - Components of the API
  - User journeys to access the API



# PBS Data Distribution Project

## Background

The Department of Health is modernising the consumption and data distribution model for the monthly PBS Schedule data, in order to:

- Improve accessibility to PBS Schedule data;
- Make the data easier to understand and use in software; and
- Improve data latency and data provision through best practice architecture.



# PBS Data Distribution Project

## Timeline

- The project started in 2019, and conducted a series of working group meetings in 2020-21
- A Private Beta with a small group of vendors was held in late 2022
- The Public Beta commenced in June 2023 and will finish when the Department is sure that it meets user needs and delivers the full end-to-end user journey
- **The Department will cease to provide ALL existing forms of data currently distributed to vendors at a point in time to be determined in consultation with Beta participants**



# PBS Data Distribution Project

## Accessing the Public Beta API

- Each Software Vendor is provided unique credentials to access the API
- Applications to access the API are made through the Health Products Portal <https://hpp.health.gov.au/>
- Note: As the API contains data under embargo, only software vendors or developers with a need to access the embargo data will be given access.
- A version of the API (that will contain only public domain data) for use by the general public is being developed



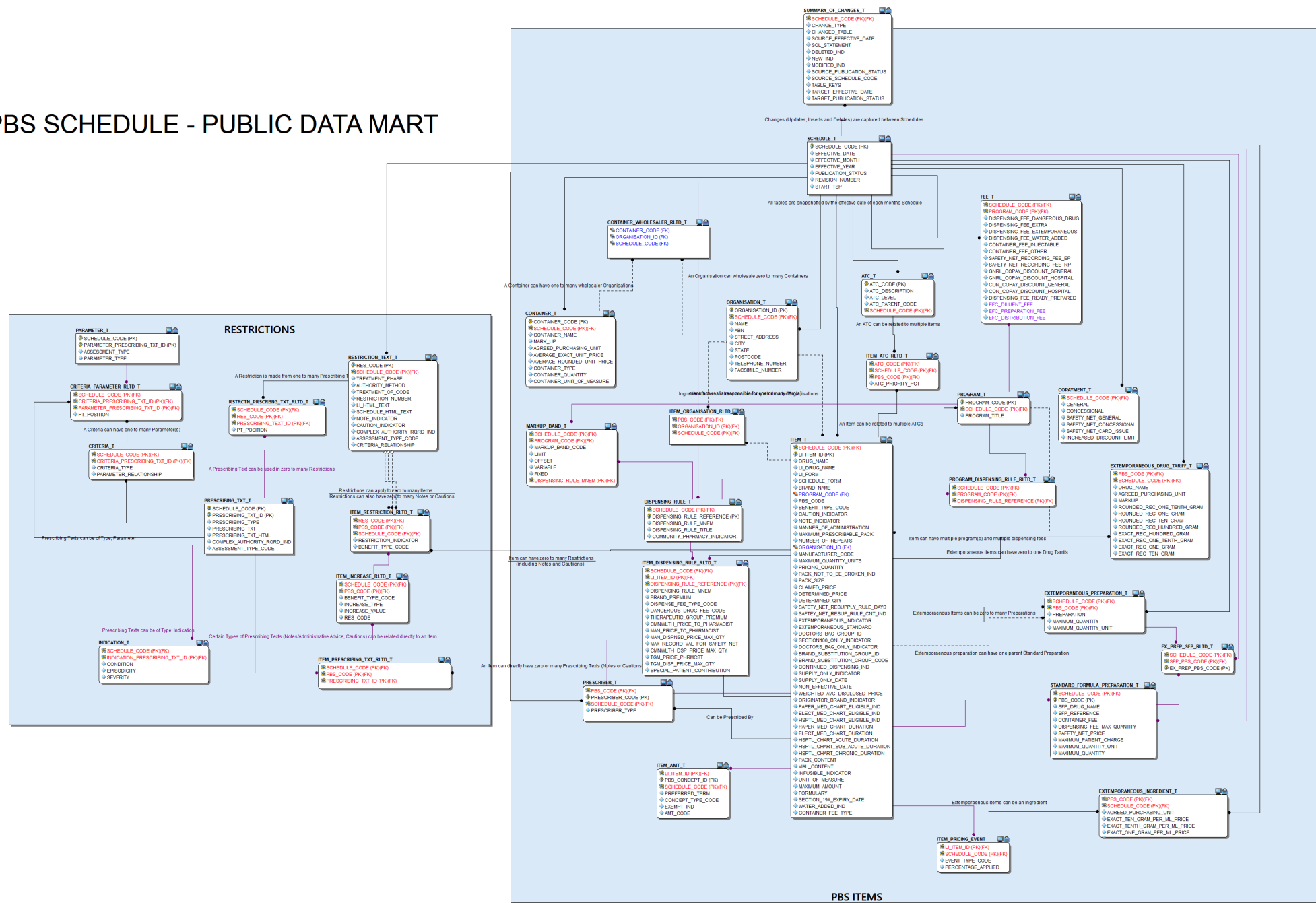
# PBS Data Distribution Project

## Features of the API

- The PBS schedule data has been loaded into a relational database
- There is one API endpoint for each table in the database
- There is one logical set of data in the API for each combination of PBS item code and Trade Product Pack
- Each monthly PBS schedule for the most recent 12 months is in the API
- Each month is distinguished in the API by a 'schedule code'
  - The 'schedules' endpoint in the API has metadata about each schedule code
  - Each API request can be filtered by schedule code, PBS program and PBS item code
- The API is rate-limited to one request per second



# PBS SCHEDULE - PUBLIC DATA MART



# PBS Data Distribution Project

## Components of the solution

### Health Products Portal

For initial access and annual renewal of credentials

- **Login with myGovID and RAM**
- Register your organisation
- Request access
- (Departmental approval)
- Receive API credentials

### Developer Portal

For development of your solution

- **Login with myGovID and RAM**
- Access your subscription key
- Browse API documentation
- Test endpoints
- Sample API queries

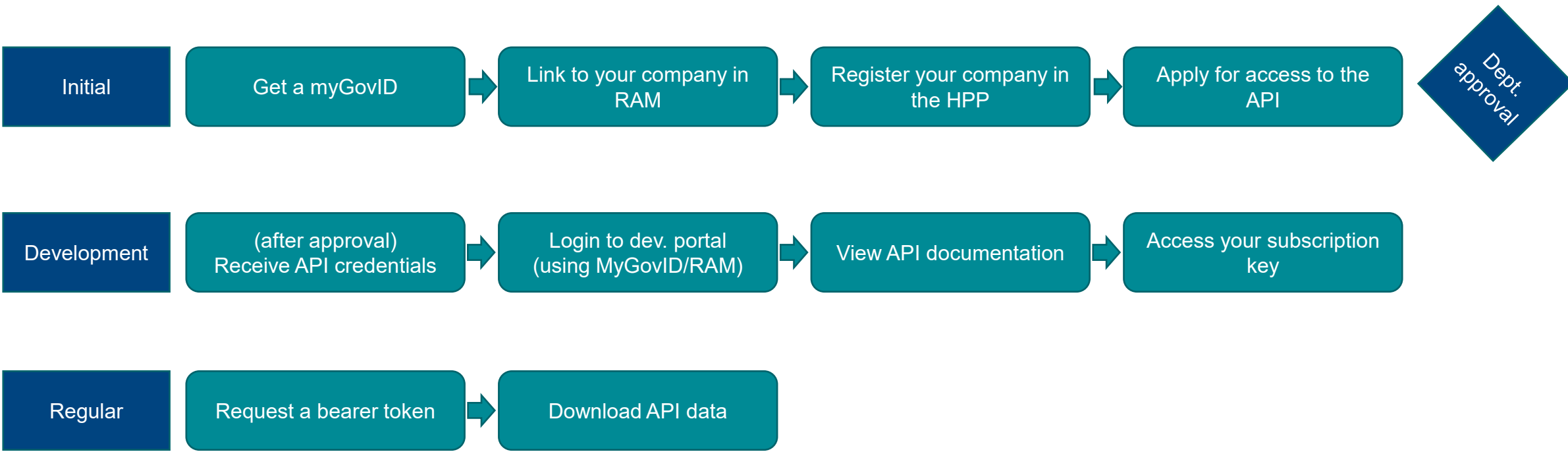
### API

For regular downloads of PBS schedule data

- **Authenticate with API credentials and subscription key**
- Download schedule data from API endpoints

# PBS Data Distribution Project

## User Journeys



# Further HPP training coming soon on:

- Using the HPP to register your company and apply for access to the API
- Accessing the developer portal and connect to the API
- Understanding the PBS data API

<https://data.pbs.gov.au/download/90205?filename=Training-Webinars-PBS-Embargo-Data-API-Public-Beta.pdf>



# Resources

- Project page: [Data Distribution Project | PBS Data](#)
- User guide for accessing the API (including gaining access, FAQ's, data dictionary and database diagram): [HPP Article Details · Health Products Portal](#)

# Questions?



Australian Government  
Department of Health and Aged Care

Any feedback during the public beta can be provided  
via email to [HPP.Support@health.gov.au](mailto:HPP.Support@health.gov.au)